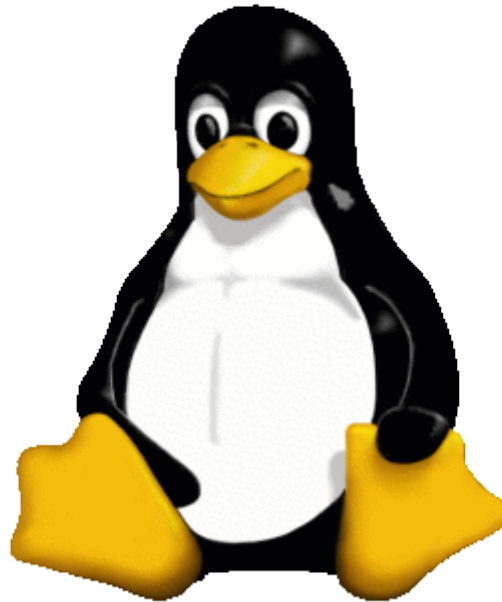


Introduction to Linux



SkillSwap presentation
by Tristan Roddis (tristan@roddis.org)
2/2/2004

Contents

- Overview
- Linux as a desktop
- Hands-on: the KDE desktop
- Linux as a server
- Hands-on: the command line
- Conclusions, Q&A

What is Linux?

- Technically: Linux is Unix
- Philosophically: Linux is GNU
- GNU project started 1984
- Linux kernel started 1991

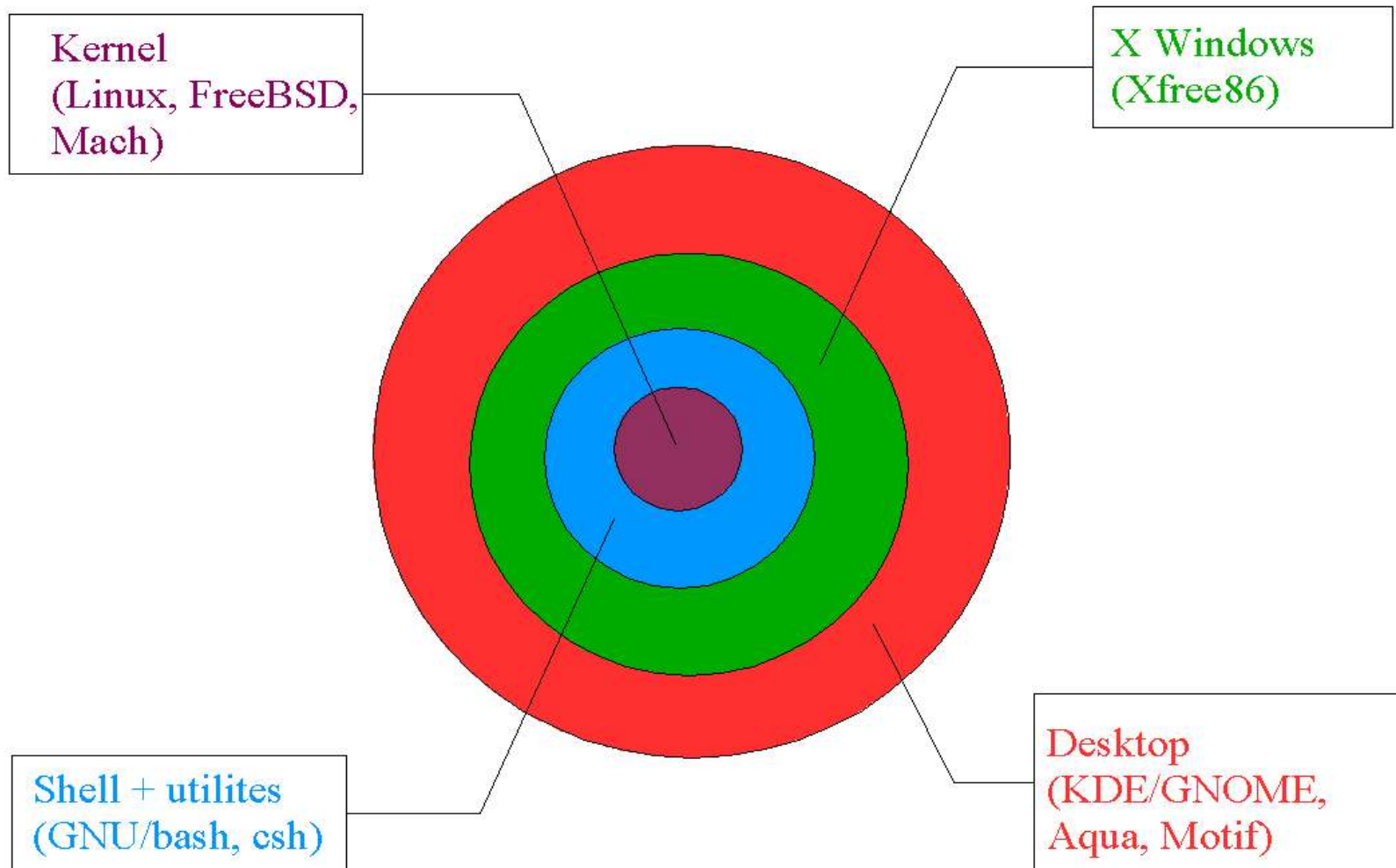
Free, Libre, Open Source Software (FLOSS)

- What can you do?
 - Freedom to use
 - Freedom to examine
 - Freedom to redistribute
 - Freedom to modify
- What can't you do?
 - Deny these freedoms to anyone else

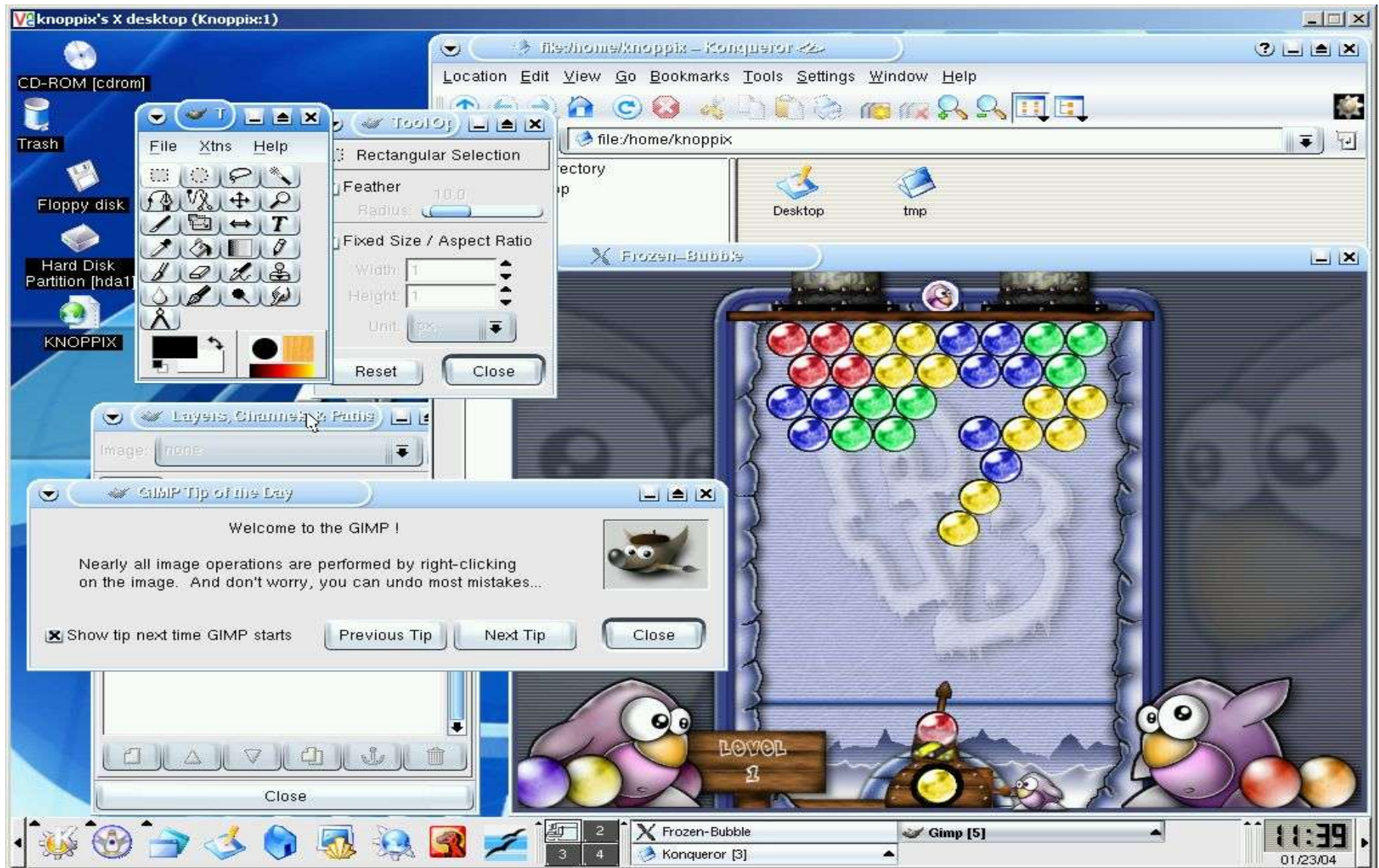
Why use Linux?

- Reliability
- Scalability
- Flexibility
- Security
- Price

The Unix 'onion'



The KDE Desktop



Desktop applications

- Word processing (OpenOffice, AbiWord)
- Programming (C, C++, Perl, Python, Java, PHP)
- Graphics (GIMP, ImageMagick)
- Web browsers (Mozilla, Konquerer)
- Email (Evolution, Mozilla, KMail)
- Audio (XMMS, Audacity)
- Games (MAME)

Suggestions

- Designers: create an image
- HTMLers: check your sites in Mozilla/Konquerer
- Programmers: create a GUI
- Project managers: create a spreadsheet
- PHBs: create a slideshow presentation
- Musicians: remix an Ogg track
- Slackers: play games

Linux Distributions

- RedHat/Fedora
 - Market leader. Licensing changes mean this is a less obvious choice than before.
- SuSE
 - Well-equipped. Recently acquired by Novell.
- Mandrake
 - Friendly, slick.
- Debian
 - Non-commercial, community-maintained.
Tricky but powerful

Dealing with legacy applications

- Same machine:
 - Dual-boot
 - Virtual machine (VMWare)
 - WINE, MOL
- Different machines:
 - VNC
 - rdesktop

Desktop questions?

- Otherwise, we'll stop for a break...

Server applications

- Web servers (Apache, Tomcat)
- Web programming (PHP, Perl, Zope, Java, etc.)
- Databases (MySQL, PostgreSQL, Oracle)
- File server (NFS, Samba)
- Email server (sendmail, POP, IMAP)
- Other (LDAP, newsgroups, terminal server)

The command line

```
tristan@isis:~/sites/roddis.org
[tristan@isis roddis.org] $ whoami
tristan
[tristan@isis roddis.org] $ pwd
/home/tristan/sites/roddis.org
[tristan@isis roddis.org] $ cal
    January 2004
Su Mo Tu We Th Fr Sa
                1  2  3
 4  5  6  7  8  9 10
11 12 13 14 15 16 17
18 19 20 21 22 23 24
25 26 27 28 29 30 31

[tristan@isis roddis.org] $ cowsay Welcome to the command line!
 _____
< Welcome to the command line! >
-----
      \      ^      ^
       (oo)\_____)
          (_____)  )\/\
           ||----w |
           ||     ||

[tristan@isis roddis.org] $
[tristan@isis roddis.org] $ █
```

Common tasks

(see [separate sheet](#))

- file stuff: `ls -l`, `pwd`, `cd`, `cp`, `mv`
- user stuff: `su`, `chmod`, `chown`
- text stuff: `less`, `tail`, `grep`, editing (`vi`, `emacs`, `joe`)
- other: `lynx`, `ncftp`, `scp`

Suggestions

- Copy the file `/etc/passwd` to your home directory
- Edit it and save changes
- Change ownership of the file to the superuser ('root')
- Try to edit it again
- Switch user to become the superuser
- View the last 10 lines of the file `/etc/passwd`
- Switch back to your normal user

Help and Support

- RTFM (distro documentation)
- [Brighton Linux Users Group](#)
- Google(!)
- Mailing lists (and archives)
- www.linuxnewbies.org
- Commercial support (e.g. LinuxIT)
- Magazines (e.g. Linux Magazine)

Uses for a Linux PC

- Arcade machine: [AdvanceMAME](#) (CD)
- Radio station: [Dynebolic](#) (CD)
- Edutainment: [Freeduc](#) (CD)
- PVR: [MythTV](#) (install/CD)
- SME office server: [eSmith](#) (install)
- Firewall: [SmoothWall](#) (install)
- Terminal server: [LTSP](#) (install)
- (n.b. 'Linux' on Windows: [cygwin](#), [TheOpenCD](#))

Questions?

www.roddis.org/linux